

R-F-M

THE MIDLANDS MART

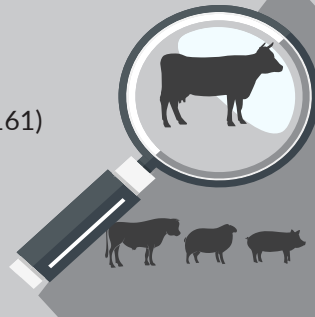
— RUGBYFARMERSMART.COM —

The Charolais Pavilion, Avenue M, Stoneleigh Park,
Kenilworth, Warwickshire CV8 2RG
02476 697731 | www.rugbyfarmersmart.com | 43/139/8013
Office hours: Monday to Friday - 9.00am - 5.00pm
Opening Time: Gates open at 5.30am until further notice

MARKET REPORT FOR MONDAY 2ND MARCH 2026

MARKET AT A GLANCE

Prime Steers to 360p/kg & £2952
Prime Heifers to 380p/kg & £2364
Prime Bulls to 398p/kg & 2564
Cows to 270p/kg & £2485
Hogg SQQ 382.24p/kg (1166 avg £161)
Hoggs to 416p/kg & £204
Ewes to £290 (234 Avg £151)



WE WILL BE A **RED** MARKET THE FIRST MONDAY
OF EVERY MONTH. THE REMAINING MONDAYS
WITH BE A **GREEN** MARKET

Catalogues & Entry Forms available by post, email or on the website
www.rugbyfarmersmart.com | admin@rugbyfarmersmart.com

**PLEASE COULD ALL VENDORS BOOK IN STOCK,
EITHER BY A QUICK CALL, TEXT OR EMAIL THANK YOU!**

Office: 02476697731 | Email: admin@rugbyfarmersmart.com | Tom: 07774723758
Tim Webster: 07437101163 | Martin Lloyd: 07399794399

Sunday lairage is now open from 9am-3:00pm
Gates close 3:00pm **STRICTLY.**

VET ATTESTATIONS

From 13th April 2024, all producers selling livestock for slaughter will require a Veterinary Attestation, or evidence of membership of a qualifying assurance scheme. Producers should prepare now for the changes Follow the link below to our FAQs for livestock markets and producers to find out more. <https://www.laa.co.uk/news/5126/veterinary-attestations-faqs-for-livestock-markets->

WELFARE STATEMENT

Following a meeting with Warwickshire Trading Standards & the FSA on Monday we have been asked to highlight the Welfare Issues being reported from the Abattoirs regarding Cull Ewes. These mainly relate to MASTITIS & LAMENESS. Condition Score i.e being very thin.

Please remember that an animal must be fit for the intended journey, it should not be ill, injured or severely lame i.e. must be full weight bearing.

These sheep are being rejected at abattoirs around the Country

Collective machinery sale on behalf of Mr A Baughan & others.

SOLD SEPT '26



SOLD SEPTEMBER 2025:
Kidd 6m Topper £7,500
Renault Tractor £7,000
Nuffield Universal £2,800
Nuffield Universal Rowcrop £2,800



SOLD SEPT '26

Oak Farm, Upper Boddington, Nr Daventry,
Northamptonshire, NN11 6DW.

The sale will commence at 10.30am

Entries are invited in the following categories:

Tractors, telehandlers, diggers, trailers, vehicles,
arable, grassland and livestock machinery.

Together with: Excavators, dump trucks, mini diggers,
telehandler and loader attachments, bowsers,
generators & agricultural requisites.

Plus: Livestock equipment, workshop equipment,
agricultural equipment and rural bygones.

For an entry form or more information please contact

James on 07570 692076 or Gilly on 07921 511852.

To be sold by auction on Saturday 21st March 2026 at 10.30am.

CATTLE : 59 Forward



With the trade still under pressure the live ring continues to hold firm against the deadweight sector, in our red sale this month. Numbers shorter and a real lack of best end cattle, but meat present throughout and meated sorts keenly bid for.

Prime Steers -

Very few handy weighted "U" grading sorts forward today, so top pence per kilo falls to a super 820kg Limousin from HW & AJ Eadon ringing the bell at 360p/kg. Tom Reeve close behind seeing Limousins to 352p/kg, with Angus Russell seeing hopper fed sorts to 350p/kg for Simmentals. Ivor Caswell saw 348p/kg while Blues from Tom Mann saw handy weight, dairy bred types to 344p/kg, and Simmies again from Messrs Russell to 340p/kg.

Heavyweights from HW & AJ Eadon selling to £2952 for monster Limousins, with Tom Reeve selling to £2485. PR Mann saw OTM Blues to £2300, with Ivor Caswell to £2220 for Simmentals.

Prime Heifers -

A real shortage of best heifers forward. Top today saw Tom Mann selling to 380p/kg for fed Limousins with South Devons from the same stable selling to 376p/kg. Angus Russell saw slick Blue sired heifers to 375p/kg, with The Manns seeing 366p/kg, 357p/kg and 355p/kg all for dairy bred Blues full of meat. Top grossing heifers sold to £2363 from the Mann stable, with no real weight present in the heifer section. The same stable saw Blues to £2343, with RJ Heckford selling Limousins to £2182, and Angus Russell to £2152.

Prime Bulls -

A tidy show of bulls and more wanted by the ringside buying support. Top of the tree saw Jasper Hart selling to 398p/kg for Blondes, with Blondes from John Eadon to 393p/kg, ahead of Limousins from the same home to 376p/kg. Blues from Pete Allen sold to 360p/kg on two occasions. Top grossing bulls from HW & AJ Eadon saw Limousins to £2564, with Blondes from the same home to £2397.

Cows -

A short show of cows saw JA & S Wrench with Blondes to 270p/kg or £1938. Angus stock Bulls from DJ Hull grossed £2485.

Auctioneer: Martin Lloyd

STEERS

Top prices per Kilo

Limousin x	820kg	360ppk	HW & AJ Eadon, Napton
Limousin x	706kg	352ppk	R & T Reeve, Rugby
Simmental	610kg	350ppk	WJ Russell & Son, Kytes Hardwick
simmental	638kg	348ppk	WJ Russell & Son, Kytes Hardwick
British Blue	568kg	344ppk	Freeman Farming, Leicester

Top prices per Head

Limousin x	820kg	£2952	HW & AJ Eadon, Napton
Limousin x	706kg	£2485	R & T Reeve, Rugby
British Blue	710kg	£2300	PR Mann & Son, Ufton
Simmental	638kg	£2220	BT Caswell & Son, Harlestone
Aberdeen Angus	656kg	£2165	Freeman Farming, Leicester

HEIFERS

Top prices per Kilo

Limousin	622kg	380ppk	PR Mann & Son, Ufton
South Devon	564kg	376ppk	PR Mann & Son, Ufton
British Blue	574kg	375ppk	WJ Russell & Son, Kytes Hardwick
British Blue	518kg	366ppk	PR Mann & Son, Ufton
British Blue	514kg	357ppk	PR Mann & Son, Ufton

Top prices per Head

Limousin	622kg	£2364	PR Mann & Son, Ufton
Limousin	662kg	£2344	PR Mann & Son, Ufton
Limousin x	682kg	£2182	RJ Heckford, Rugby
British Blue	574kg	£2153	WJ Russell & Son, Kytes Hardwick
British Blue	622kg	£2152	R & T Reeve, Rugby



HOGGS 1166 FORWARD

SQQ 382.24P/KG AVG £161TOP £204

Hoggs;

Beyond any prediction with Ramadan feasting underway and a slow in trade mid-week predictions expected a slow in trade albeit even then showing good returns. In the alternative today we witnessed a flying trade from start to finish with Export and City lambs in hot demand and buyers keen for meat from start to finish. Simply not enough supply and many more numbers needed. An SQQ of 382p/kg a step back on the week but Hoggs still incredibly dear and any quotes under £8 dw would be short. Meat the key and all Export Lambs wanted today. Topping at 416p/kg for 38kg from Adrian Hope, Thame.

DJ Hull & Partners with another load seeing 40kg at 415p/kg equal with quality from S & D North, D W Gurney & Son 43kg at 414p/kg with H & J East 410p/kg. Export Hoggs regularly trading 390p/kg plus for full meat Hoggs with first cross and lesser fed 370 -390p/kg and lean sorts 350p/kg. Weight well chased and topped at 47kg and 404p/kg for R Kellett whom also sold 48kg at 396p/kg and D W Gurney & Son 47.5kg at 392p/kg. Milkwood Farm Ltd up from Newbury sold Hoggs at 46kg at 387p/kg. Midweight and Heavies regularly past 350p/kg albeit super heavies and first cross 300 - 320p/kg mark.

An all in Avg of £161 the real headline.

In the lump Export Hoggs to £178 for 44kg from D W Gurney & Son with Hull, Essex 43kg at £175 and Gurney 45.5kg a £175. Adrian Hope 42.5kg at £174 and V Phipps 44kg at £173.

Overall today a top of £204 at 70kg for V J Roots with R Kellett 72kg at £200 and Milkwood Farms Limited £196 and £192 for 60 & 64kg. J Moron 60kg at £192.

Trade again simply flying and despite all predictions for this point in the Festival or indeed in our year.

Auctioneer: Tom Wrench

HOGG SQQ 382.24 SQQ p/kg

Per Kilo **under 45.5kg**

X Bred	38kg	416ppk	J Hope & Son, Testsworth
Texel	40kg	415ppk	DJ Hull & Partners, Southminster
Texel	40.5kg	415ppk	S & D North, Drayton Parslow
Beltex	43kg	414ppk	DW Gurney & Son, Stoke Hammond
Texel	40kg	410ppk	H&J East, Kiddlington

Per HEAD

Beltex	43kg	£196	DW Gurney & Son, Stoke Hammond
Charolais	43kg	£189	DJ Hull & Partners, Southminster
Beltex	45.5kg	£188	DW Gurney & Son, Stoke Hammond
X Bred	42.5kg	£186	J Hope & Son, Testsworth
Beltex	44kg	£186	DW Gurney & Son, Stoke Hammond

Per Kilo **over 45.5kg**

Beltex	47kg	404ppk	R Kellet, Castle Ashby
Texel	48kg	396ppk	R Kellet, Castle Ashby
Beltex	47.5kg	392ppk	DW Gurney & Son, Stoke Hammond
Texel	46kg	387ppk	Milkwood Farm Ltd, Newbury
Texel	46kg	383ppk	VR Phipps, Banbury

Per HEAD

Texel	70kg	£204	VJ Roots, Southam
Texel	72kg	£200	R Kellet, Castle Ashby
Texel	64kg	£196	Milkwood Farm Ltd, Newbury
Texel	60kg	£192	Milkwood Farm Ltd, Newbury
Charolais	63kg	£192	J Morton, Napton

CULL EWES: 247 FORWARD top at £290



Woefully short again meeting a flying trade to avg £151. Topping at £290 for David Leedham with pure Texels and M & C Morris £262. E Glover, Lichfield sold shaped Texels at £260 and none VAN from N J Sidwell £240 and equalled by J & M Ironmonger. White Face first cross ewes to £194 for A Hopkinson and £192 for C E Cockerill & Son generally £18 plus. Suffolks to £182 for V R Phipps but no weighted Suffolks forwards. Mules to J Baker & Sons with Scottish at £174. Mules generally over £150 if weighted

MORE NEEDED FOR THE END OF THE FESTIVAL.

Auctioneer: Tom Wrench

EWES

Beltex	£290	DM Leedham, Lutterworth	Texel	£240	NJ Sidwell, Coventry
Texel	£262	M&C Morris, Brauston	Texel	£240	J&M Ironmonger, Crimscode
Texel	£260	EJ Glover, Croxall	Texel	£228	DM Leedham, Lutterworth



AUTO GATES LTD

Bridge Farm, Holt Lane, Ashby Magna, LE17 5NJ

Trevor 07498993897/01455 202791

Email: tjautogate@gmail.com



STORE LAMBS - 26.02.26

Likely the last hurrah for the store lambs but what a trade. The whole yard all in averaging £127.41 and simply on fire.

Top today saw the JW Pickford & Son selling to £144.50 for Suffolks, with Dutch Spotted Ram Lambs selling to £142 from G Bell, Ripon. MJ & IJ Gibbs saw Suffolks to £142, with Townshend Partners selling Charollais to £137. A real run of Texel lambs off roots from RW Thomas & Son saw £135 for big pens full on 4 occasions, with the run of 125 averaging £133.88.

Auctioneer: Martin Lloyd



CALVES - 26.02.26

Baby Calves : 46 Forward

A few early Calf outlets starting to sell

Still a great demand for calves with more potential buyers each sale, all trying to replace stock

Top price today was £630 for a lovely Angus Bull from George Pountney

<i>Limousin Bulls.</i>	<i>£400 to £600</i>
<i>Limousin Hfrs.</i>	<i>to £535</i>
<i>British Blue Bulls.</i>	<i>£200 to £420</i>
<i>British Blue Hfrs.</i>	<i>£270 to £460</i>
<i>Simmental Bulls.</i>	<i>to £595</i>
<i>Simmental Hfrs.</i>	<i>£590 to £600</i>
<i>Angus Bulls.</i>	<i>£460 to £630</i>
<i>Angus Hfrs.</i>	<i>to £390</i>
<i>Holstein Bulls.</i>	<i>£100 to £280</i>

We also sold an 7mo Dexter Bull in the pen for £350

Next Sale 12th March at 10.30am

Auctioneer : Tim Webster

STORE CATTLE - 26.02.26



A marvellous entry of 312 Store Cattle for the end of February Sale saw a full yarding under the hammer and all sold at fast rates. Short keep Cattle the hardest sold with current deadweight quotes slightly depressing. Longer keep though a fast trade with optimism the word of the day.

Starting with Feeding Bulls Shorthorn 6m of age sold to £1530 & £1430 for E C Parker & Son. Into the Store Cattle and J W Lowick with an annual consignment selling yearling Cattle to a top of £1980 and £1940 for framed Limousin x Steers with others £1840 & £1810 and sisters to £1710. A serious avg for a wagon load of yearlings. Similar aged goods down from Leicestershire next with JV & SM Lea & Sons seeing Charolais Steers to £1890, Angus £1700 and South Devons £1770.

Charolais next saw E C Parker & Son sell to £1800 15m of age and sisters 16-17m £1580. 42 next from the Cotswolds with W S Gabb selling his first tranche of Bucket Stores to a massive enquiry. Topping at £2180 and £2100 these Charolais Buckets 17-19m saw Simmetals at £1940 and plenty of Steers in the high £1800's. Heifers saw a top of £1890 for Charolais with Simmental Heifers £1700. JB & HM Gilbert next with the shape seeing Limousin Steers to £2200 17m and Heifers 21m to £2390 and £2280.

Another week for RS Beaty & Son selling to £2190 for Simmental Heifers 18-20m and 21m at £2200. Strong runs of Angus from H L Goode & Son saw strong Silage Cattle at 20m top for Angus at £2550 and Shorthorns £2460. This run saw plenty in the £2360 category with only one Steer under £2000. Heifers topping at £2260 for Beef Shorthorns and £2200 for Angus the total avg for the 31 Cattle forwards returning £2206.45p!!

Famous Manor Farm Partners next seeing Blue Heifers 19 -20m at £1800 and more Blue buckets from J Jackson, Market Bosworth with Steers to £2280 and £2140 and sisters £2010. A run down from Derbyshire next saw a wagon load of genuine outliers well chased at 27-30m topping at £2260 for 3 Steers with others £2180 a marvellous run of traditional Cattle. An increased entry on the year as more Vendors travel to this popular sale

Auctioneer: Tom Wrench

Chartered Surveyors - Estate Agents - Letting Agents



Oakhill Farm, Goldicote, Stratford Upon Avon

**For sale by Private Treaty - Guide Price
£1,500,000**

Approximately 92 acres of arable and woodland with stunning views. 2 agricultural buildings and a log cabin. Also Class Q permission for a substantial residential dwelling.

Call Sophie Wrench for more details.

T: 07538 439493

E: Sophie@margetts.co.uk



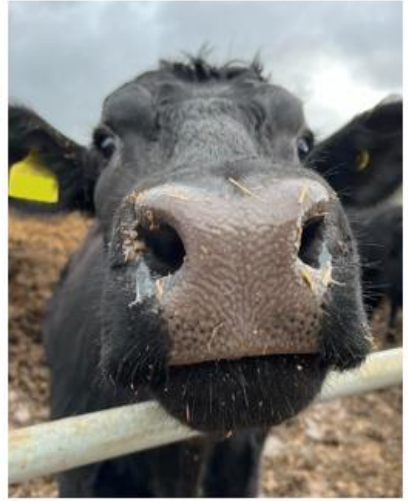
MARGETTS
ESTABLISHED 1806



Calling All English beef finishers!

I am a student at Harper Adams conducting research into English beef farmer willingness to join integrated beef schemes.

If you have a spare 10 minutes,
I would greatly appreciate your time to fill in my anonymous questionnaire.
You can access the survey from the QR code below.



Harper Adams
University



Rix
OAKLEYS

**Your Local
Independent Farm
Fuels Supplier**



Gas Oil
& Diesel



Lubricants
& Additives



Fuel Tanks



Heating Oil



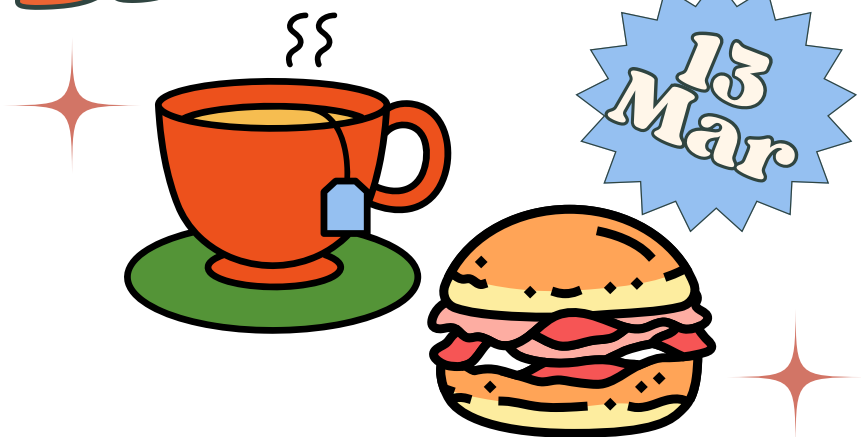
AdBlue®

Call for a quote on:
01675 437557

www.rix.co.uk | midlands@rix.co.uk

ORGANISED BY
THE WARWICKSHIRE BREAKFAST BUTTY VAN PROJECT

FARMER'S BREAKFAST



**JOIN US FOR A BACON ROLL AND A
CUPPA FROM 10:30AM TO 12NOON**

**BY KIND INVITATION OF PAT MILNER
TOLLDISH HALL FARM, PARROTS GROVE,
COVENTRY, CV2 1NR**

Warwickshire Breakfast Butty Van is an initiative from the Methodist
Church West Midlands District Borderlands Ecumenical Chaplaincy
Supported by Addington Fund



4
YEARS

Farm insurance, the way it should be

We're an independent, family run insurance broker that prides itself on long term relationships with clients. This is supported by our team's extensive knowledge and experience of farming and the countryside. Covering the Home Counties, Midlands, South East and South West, we are insurance partners for your farm, agri-business or equestrian enterprise.



Farm & Equine **01865 844985**
www.county-insurance.co.uk/farms

County
Insurance Services 

Independent Insurance Brokers County Insurance Services Limited. Address and Registered Office: County House, Glyme Court, Langford Lane, Kidlington, Oxon OX5 1LQ. Authorised and regulated by the Financial Conduct Authority (FCA) (FRN: 597267). Company registered in England No. 08411634

THE 103rd MIDSHIRES PRODUCE AUCTION.

Approx 3,500 Tonnes on Farms and Estates in the
Central Midland Counties.

To include a comprehensive selection of
HAY, STRAW, HAYLAGE, SILAGE, FEED POTATOES & FODDER BEET
in all sizes, easily accessible to towns in the midlands including:
Atherstone, Coventry, Leicester, Market Harborough, Northampton,
Rugby, Southam, and Tamworth.

Together with:

160 Tonnes Maize Silage at Sapcote, Leicester,
300 Tonnes Maize Silage at Ansty, Coventry,
100 Tonnes Fodder Beet at Grendon, Atherstone.

Also included:

Hay, Straw, Haylage, Silage, Sugar Beet & Fodder Beet for delivery.

TO BE SOLD BY AUCTION ON

Tuesday 10th March 2026 at 2.30pm.

Lutterworth Rugby Football Club,
Ashby Lane, Bitteswell, Lutterworth,
Leicestershire LE17 4LW

(3 Miles from Junction 20 of the M1 Motorway)

What3words: ///facelift.testing.prevented.



**A complete dairy farm dispersal sale on behalf of
Evolution Farming Ltd, Houghton-on-the-Hill,
Leicestershire, LE7 9GB**

To include: 2020 Manitou MLT737-170 PS Telescopic Handler, 2017 John Deere 6120R 4WD Tractor, 2008 Massey Ferguson 5445 Dyna-4 Tractor, 2020 Keenan MechFiber 365 Diet Feeder.

Together with: 2011 Honda TRX420FPM Quad Bike, 2010 Suzuki King Quad 400 Quad Bike, 2020 Bobcat S500 Skid Steer Loader, 2018 Bobcat S500 Skid Steer Loader, 2025 Allflex Scanning Race, 2003 Morris Mobile Cattle Crush, Two Hancock Low-Loader Trailers.

Plus: Dairy Equipment, Livestock Handling Equipment, Livestock Feeding Equipment, Effluent Management Equipment, Grassland Machinery
and Agricultural Requisites.

To be held on the premises and online on Auctionmarts

www.auctionmarts.howkinsandharrison.com

on Thursday 12th March 2026 at 10.30am.

ORGANISED BY AND SUPPORTING
THE WARWICKSHIRE BREAKFAST BUTTY VAN PROJECT

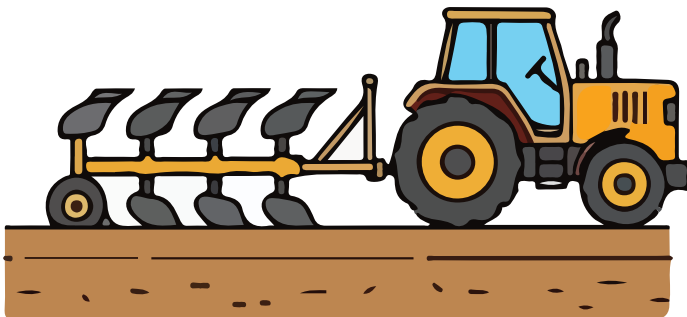
CHARITY PLOUGHING MATCH

7 MARCH 2026

9am Entry, 10am Ploughing Starts

Hines House Farm, Banbury Road,
Stratford-upon-Avon, CV37 7NF

BREAKFAST TEA, COFFEE AND CAKE



Ploughing entries to Bob Butlin - bobbutlin48@hotmail.com

Warwickshire Breakfast Butty Van is an initiative from the Methodist
Church West Midlands District Borderlands Ecumenical Chaplaincy

Supported by Addington Fund



Here to listen and support you

Contact The Farming Community Network
to speak in confidence with a sympathetic
person who understands farming life.

Call 03000 111 999

Email help@fcn.org.uk

(Helpline open 7am-11pm, 365 days of the year)

FCN | THE FARMING
COMMUNITY
NETWORK

Berryfields Farm

BERRYSTOCK FEEDS



**PROVIDING CATTLE
AND SHEEP FEEDS FOR
THE MODERN MARKET**



Do You Want?

- ♦ HIGH PERFORMANCE
- ♦ COST EFFECTIVE
- ♦ FULLY ASSURED
- ♦ COMPLETE FEEDS
- ♦ INTEGRATED FEEDING SYSTEMS

Then contact **BERRYSTOCK FEEDS:**

Tel: 01788 890320 E-Mail: admin@berryfieldsfarm.co.uk

Web: www.berrystockfeeds.co.uk

UFAS 350

DO IT THE BERRYSTOCK WAY

WE COVER SMALL FARMS, LARGE FARMS AND EVERYTHING IN BETWEEN



From sheep farmers to arable farmers.
Flower growers to poultry farmers.

NFU Mutual is proud to insure over 75% of UK farms with our Farm Select insurance. But we want more farms to benefit from great cover and local service. NFU Mutual has introduced Farm Essentials insurance – designed to meet the needs of smaller farms.

As your local agency, we are close by and can provide expert advice and hands-on support when you need it.

Call Coventry Office on 02476 444518
NFU Mutual, 6 Eastwood Business Village,
Harry Weston Road, Binley Business Park,
Coventry, CV3 2UB



NFU Mutual
FARM INSURANCE